



DEPARTMENT OF
EDUCATION
learners first



RA 4 Nubeena Back Road
Nubeena TAS 7184

Email: tasman.district.school@education.tas.gov.au

Phone: 03 6250 2126

<http://www.tasman.education.tas.edu.au>

08 March 2019

Principal News

Dear Parents and Carers

The halfway mark of the term this week and we are into Autumn as well, where has the time gone. Students are well settled into their classes and routines and teachers have been busily preparing and planning their classes to ensure we have the maximum learning happening across the school.

School Opening Date Change

Please be advised the school opening previously advertised as the 27th March has been postponed. The school will advertise the new date shortly and send out invites.

Sporting Carnivals

Over the past few weeks we have had our Primary Athletics Run off and also the Secondary Swimming Carnival. Both of these events were very well attended and there was a lot of cheering and barracking happening across the school. I want to acknowledge the Year 3 Boys at the athletics carnival who displayed positive sportsmanship and support to their classmates and each other. The conversations these boys were having about their team mates was amazing and a credit to them in supporting everyone, well done boys!

Internet and IT issues over the past few weeks

Over the past few weeks the school has experienced significant IT and network issues in connecting to the

internet and being present online while there have been upgrades to our services across the Peninsula. Our focus this year is on developing our Blended learning model of education, where we assist our learning with the use of IT across the curriculum and our investment into IT over the past few years has been quite significant. Hopefully, now we are able to implement this strategy into our programs and we will have updated network speeds and systems. I want to thank the staff and students for their patience during this time and thank the IT and network team as part of the Department of Education for their ongoing support during this time.

Kind Regards, Ted Barrance
Principal

Star of the Week Awards

28/02/2019

Prep - I
My-Duyen N
Year 1 - 2
Noah W
Year 3 - 4
-
Year 4 - 5
Liam T
Year - 6
Neave B



07/03/2019

Prep - I
Axle P
Year 1 - 2
Ai-nhi N
Year 3 - 4
-
Year 4 - 5
Kane W
Year - 6
Talika B

Launch into Learning - LIL

Launch into Learning, **Term 1** is held every Friday on the following dates: 15 March, 22 March, 29 March, and 5 April.

Moving On

School Hall 9.00am - 10.00am

LiL Learn & Play

Kindergarten 10.15am - 11.30am

For further information and a term program, please contact Elizabeth Legge (Launching into Learning Coordinator) on 6250 2126.



SEBA Basketball 2019

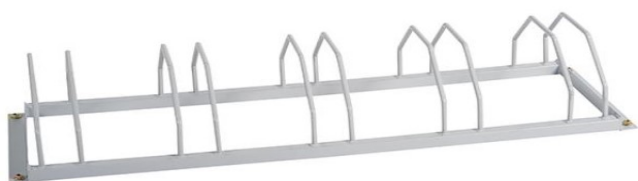
Tasman Students interested in playing in the 2019 SEBA Basketball Season:

Forms are now available at the office. Please return ASAP.



Student Bike Stands

The Tasman Community Op-Shop & Library Inc along with Tasman District School Association have each funded a **5-Bay Bike Stand** for students to securely lock their bike up during the school day. The bike rack's will arrive in the next two weeks. If your child rides to school they will soon require a bike lock/chain if they wish to securely store their bike during the school day.



Star Of the Week

Year 1-2 **Star of the Week** was omitted from the last fortnights newsletter apologies to the below two students who were outstanding Star of the Weeks.

14/02/2019

Year 1 - 2

Nikiah B

21/02/2019

Year 1 - 2

Spencer P



World's Greatest Shave

Riley Little is shaving his head to help **beat blood cancer!!** The shave will take place here at school on **Friday 15 March**. If you would like to help Riley beat blood cancer use the link below to donate! Well done Riley!

<https://secure.leukaemiafoundation.org.au/registrant/FundraisingPage.aspx?RegistrationID=738093>



Sponsor me



Student Drink Bottles

A reminder to parents and carers students need to bring a **drink bottle** to school each day preferably filled with **water**. Students also have the option of leaving the drink bottle in the classroom and filling with water at school each morning.



Students with Anaphylaxis

Please make sure that your child's epipen has been signed into the school office where it will be kept along with your child's most recent Anaphylaxis Action Plan.

The plan that we are referring to is the one that has the patient's photo attached and signed off by a doctor.

According to ASCIA, Australia's authority on anaphylaxis, the plans should be renewed by your doctor at least once a year.

If you haven't already done so, PLEASE SUPPLY THE SCHOOL with the student's Personal Anaphylaxis Plan.

This is the Plan that has been signed off by a doctor. It will look similar to one of these plans.

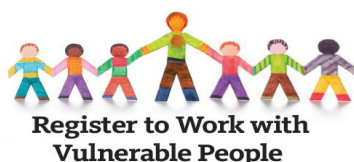
The plan must be no older than 12 months.



Working with Vulnerable People Card

A reminder to parents/grandparents/carers and community members who wish to volunteer in our school, that you must have a current Working with Vulnerable People Card. When applying for the card please remember to "attach yourself" to Tasman District School by choosing Department of Education from the organisation drop-down box and then select Tasman District School from the location drop-down box. For more information follow the link below. The cost is \$18.36. We appreciate the support parents/grandparents/carers and community members give us. Generally applicants will receive their results within six weeks of completing the application process. There may be delays, however, depending on the applicant's personal information. Also a reminder to all our volunteers please sign in/out at the school office and have your Working with Vulnerable People Card with you at all times.

http://www.justice.tas.gov.au/working_with_children



Student Medication

The office is currently updating student information regarding medical details. It is important to keep the school informed of any changes in your child/rens details. We have included some Education Department Policy information below, also see the attached health medication info sheet.

Under no circumstance will medication be administered to students unless authority is received from a student's medical practitioner or pharmacist and parent or guardian. This includes asthma medication.

Prescribed long & short term medication i.e. antibiotics can only be administered to students when the appropriate form has been completed and signed by the child's medical practitioner or pharmacist and parent or guardian. In all instances, medication must be handed in to the office in the original container, with the chemist's instruction label attached. Non-prescribed oral medication, such as analgesics (pain killers ie Panadol) and over-the-counter medication cannot be administered by school staff unless the appropriate form is completed.

NO medication is to be self-administered, including cough mixture, flu tablets and medicated creams/ointments.

The forms are available from the school office or email tasman.district.school@education.tas.gov.au



School levies 2019

An Invoice has been issued to all families for levies, payment is due in full by Friday, 12th April. If you experience difficulties with payment by the due date please contact Jacqui Hunter, our School Business Manager, to discuss your individual case and implement a payment plan, Payment Options BPay, Service Tasmania, Eftpos, Credit Card over the phone (6250 2126), Cheque payable to Tasman District School, Cash and Part Payment Plan.



Koonya Garlic Festival

Students, Staff and Volunteers had a great day at the **Koonya Garlic Festival** promoting and fund-raising for the programs on offer for students at the school farm.

Thank you to everyone that came along and supported us. We raised \$543.35

Congratulations to our winners

\$100 Chook Poo Lotto (87) Mitchell

\$50 Chook Poo Lotto (45) Gaby

Picnic Table Raffle—John Longo Murdunna

Have another chance to win— Come and visit us at

Bream Creek Show Sat March 16th



Special thanks to students

Drew, Cooper, Candina,

Abigail and Makayla.

TRAVEL TO BELGIUM AND FRANCE

THE FRANK MACDONALD MM

memorial prize

OPEN TO ALL TASMANIAN
YEAR 9 STUDENTS

2019 PRIZE TOPIC

QUESTION 1:

From April 1918 the stalemate of the preceding years of World War I began to give way, leading to the Armistice. Outline key factors that promoted this change and why you believe such factors weren't present or enacted in the preceding years of the war.

OR

QUESTION 2:

How might Australian society's perception of women changed because of WWI?

OR

QUESTION 3:

Evaluate the extent to which casualties of World War I affected Australia as a nation. Consider social, political and economic factors in your response.

Students are required to respond to a topic in an essay format or an audio-visual/ICT presentation.

If you are being home-schooled you can forward your entry directly to the

Frank MacDonald MM Memorial Prize, DoE - Professional Learning Institute Learning Events, The Project Officer, GPO Box 169, Hobart 7001

For more information, ask your teacher or visit our website at:

<https://www.education.tas.gov.au/students/awards-scholarships-students/>

CLOSING DATE: FRIDAY 23 AUGUST 2019

Community News

Fun Filled Karaoke Night

Hosted by
Statewide DJ Solutions with support from **97.7 Tasman FM**.

When: **Saturday 9 March 2019**

Venue: **Tasman Ex-Service Club Nubeena**

Time: **5.30pm**

Cost: **Gold Coin Donation**

Kids are Welcome.

Prizes for The Best Singers, dancers and more.....

Raffles will be held throughout the evening.

All Proceeds will go to the **Volunteers Firefighters**, so come on down to the **Tasman Ex-service Club** for a night full of Fun and Support Our Volunteer Family's.

For More Info Contact Dale 0458 776 434

Donations of Prizes also welcome to make this night a success!



SEASON 2019

WHEN: Thursday Nights (Girls aged 4-18)
Friday Nights (Boys aged 4-18)

WHERE: Dodges Ferry School Gym

TIME: 4:30pm – 9:30pm

COST: BTAS - \$35 (Ages 12 and Under)
\$60 (Ages 18 and Under)
SEBA Fees - \$80 (Ages 8 and Under)
\$145 (All other age groups)

PLEASE REGISTER BEFORE THE 21ST OF MARCH TO SECURE YOUR SPOT IN A TEAM!

All details are on our S.E.B.A Facebook page and website please contact dodgesferryseba@gmail.com for further details.



TICKET TO PLAY



Vouchers to help with the cost of sporting club registration are available for children aged 5-17 on Centrelink Health Care or Pensioner Concession Cards. For more information, go to communities.tas.gov.au/ticket-to-play

Get your ticket to play and join a club in 2019!

Australian Government Mobile Service Centre



Serving Regional Australia

Visit the Mobile Service Centre to find out about Australian Government payments and services for rural families, older Australians, students, job seekers, people with disability, carers, farmers and self-employed people.

Information about Department of Veterans' Affairs programs and support services for veterans and their families will also be available.

Staff can provide you with information and support. They can also help you create a myGov account. myGov is a simple and secure way to access government services online.

Monday, 18 March 2019

9 am to 4 pm

Judd Park car park, Main Road

NUBEENA

For more information, go to humanservices.gov.au/mobileoffice or call 132 316.



Dates to Remember:

Monday 11 March	Labour Day Public Holiday
Wednesday 13 March	Duke of Edinburgh Bushwalk - Cape Hauy
Wednesday 13 March	Interschool Primary Athletics Carnival - Hobart Domain
Friday 15 March - Saturday 16 March	Bream Creek Show - Selected Cattle Handling Students
Friday 15 March	Surfing Lessons - Physical Recreation Class
Friday 22 March	Progress Reports Go Home
Friday 22 March	Surfing Lessons - Physical Recreation Class
Thursday 28 March - Sunday 31 March	Beef Expo - Selected Cattle Handling Students
Wednesday 27 March	Duke of Edinburgh Bushwalk - Cape Raoul
Thursday 28 March	Then & Now School Performance
Thursday 28 March - Sunday 31 March	Tasmanian Junior Beef Expo
Friday 29 March	Surfing Lessons - Physical Recreation Class
Monday 1 April	School Photo Day
Tuesday 9 April - Wednesday 10 April	Duke of Edinburgh Bushwalk - Cape Pillar

