



DEPARTMENT OF
EDUCATION
learners first



RA 4 Nubeena Back Road
Nubeena TAS 7184

Email: tasman.district.school@education.tas.gov.au

Phone: 03 6250 2126

<http://www.tasman.education.tas.edu.au>

03 May 2019

Principal News

Welcome back to Term 2. This is the busy term for the year with many activities happening. Please keep updated through our calendar at the back of the newsletter for upcoming events and activities you may be interested in.

Some of our students are currently competing in the AGFEST competitions and we wish them all the best in their endeavours. They have been hard at work the last few years practicing and learning about cattle handling and farming techniques. They have benefited from the leadership and teamwork opportunities that come with a program such as this. If you want to follow their progress please check out the Food and Fibre at Tasman District School Facebook page, otherwise if you are heading up to AGFEST then please go and say hello and wish the students all the best for their competitions as they are defending their title this year. Well done to all involved in this endeavour as it is a lot of planning and preparing to get it happening.

On May 16 at 11am the school will officially be opened by the Minister for Education Mr Jeremy Rockliff. All parents and community members are welcome to attend this event to celebrate the achievement that has been the rebuilding of what were some pretty ordinary buildings. Phase one of our rebuild plan is looking fantastic and this is a time to celebrate with the staff, builders, architects and DoE personnel involved in this stage of development. The opening will be in the school foyer and community library and will be followed by tea, coffee and light morning tea with a tour of the new

buildings. Please come along and join in the celebrations and planning for the future.

NAPLAN is coming up in week three this term and will be different from previous years. The students will now be taking the tests online, the format has changed from previous years to suit the online version. The students will have two weeks in which to complete the tests and there will be times for catch-up testing towards the end of the week. Our technology is completely up to date and is in line with the requirements to administer the tests. Students will be supported by staff in adjusting to this new process. If you have any questions please contact the school.

I look forward to getting around classes to see the learning happening across the school and working with students and staff to ensure there is consistent and supportive learning environments to cater for everyone's needs.

Kind Regards, Ted Barrance
Principal

Star of the Week Awards

02/05/2019

Year 3 - 4

Prep - 1

Livi C

-

Year 4 - 5

Year 1 - 2

Xander C

Lucas S

Year - 6

Holly M



Launching into Learning - LIL

Launching into Learning, **Term 2** held every Friday during school term, program and dates to follow.

Moving On

School Hall 9.00am - 10.00am

LiL Learn & Play

Kindergarten 10.15am - 11.30am

For further information and a term program, please contact Elizabeth Legge (Launching into Learning Coordinator) on 6250 2126.



Student Banking

Congratulations **Tasman District School**

Bendigo Bank are pleased to advise that during Term 1 students have made more than **120 deposits** with their banking totalling over **\$1000**.

Well done to all the families and students involved and we look forward to building on our relationship with the school into the future.

Support from our student bankers during term 1 enabled us to support the local Arts and Crafts Exhibition, sponsor the Koonya Garlic Festival and assisted a member of the local community to compete interstate in their chosen sport.

Steve McQueeney | Branch Manager



Nubeena & Tasman
Community Bank®
Branch

Champions Athletics Carnival

Well done to **Lockie F, Hailey B, Aiden S, Hayden S, Lara B, Jack S, William B, Gemma S** who did a fantastic job in representing Tasman at the **SPSSA Athletics Champions Carnival** held last term at the Domain. All participated with confidence, enjoyment and pride in their individual events. We thank the Parents/Grandparents/Carers who made this day possible.

Woolworths - Earn & Learn

Woolworths Earn & Learn is back, between 1 May and 25 June 2019 and Tasman are excited to be taking part. You can collect stickers at Woolworths that go towards Earn & Learn points. For every \$10 you spend at Woolworths (excluding the purchase of tobacco, liquor and gift cards), you will receive a sticker. The more points the school earn, the more we can redeem from a choice of over **10,000 educational resources** including mathematics and English resources, art and crafts materials and much, much more!

Iron on Labels

Due to the amount of lost property being handed in and not clearly labelled the office is offering the option to purchase **Iron-on fabric labels** for the low cost of **\$1.00** each. You can have up to 10 letters + a choice of any border pictured below. The labels come with easy to apply instructions.

School will be running a competition offering prizes for the top 3 students that collect the most stickers.

First prize is a \$20 lunch order voucher kindly donated by the Port Arthur Store & Takeaway. Just bring your completed sticker sheet (available from woolworths and the school office) into the school office to be counted, winner announced soon after close of competition.

We are grateful for your support and look forward to a successful program.

| | | | |
|--|-----------|--|--------------|
| | Underline | | Edged |
| | Square | | Train |
| | Pointed | | Sweet Hearts |
| | Rounded | | Flowers |
| | Crocodile | | |





Tasman District School Enterprise are proud to announce the launch of three new products.

TASMAN TAGS

BY: MARIANA ISANA

Amazing acrylic name tags available in three different styles and lots of colours. Order forms available from the school office.

Priced from \$4 to \$10



DECLAN'S ANIMAL TAGS

BY: DECLAN ETHERINGTON

Durable aluminium tags, laser engraved with your favourite pet's name. Available in a range of colours, sizes and styles. Order forms at the school office.

PRICES: Small - \$5 Medium - \$6

ROCKIN' ROAD SIGNS

BY: HAYDEN EAVES

Tassie road signs with a difference, these fridge magnets will be for sale at local shops and the school. Personalised designs available on request.

\$3 each.



All profits from sales of TDS Enterprise products support the school camps program.

For product enquiries please contact tasmanenterprise@gmail.com

ANZAC Day Service

The Primary Choir sang beautifully at the ANZAC Day 11am Service. Lizzie S addressed the crowd with a heartfelt speech of courage and sacrifice inspired by her family history and A Song for Grace by Sara Storer.



LEST WE FORGET



On April 3, **Tasman District School**, thanks to the **Rotary Club of Tasman**, had 16 students take part in a Learning the Ropes course offered by **Windeward Bound**.

It was an early start, leaving school at 6:45am. We ventured up to the Hobart Waterfront where the ship was docked.

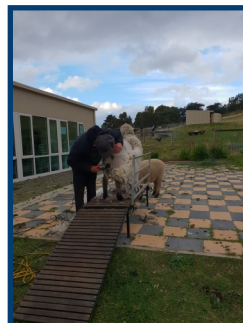
We were separated into 3 groups where we took part in teamwork exercises. These were a trim challenge, (where we learned to row as a team in a 6m longboat), helmsmanship and we also donned a harness and climbed up the rigging to the lookout platform. Each activity had their own challenges and once we had completed those we took the boat for a sail down the Derwent to the Wrest Point Casino before turning back around and back to the docks.

A huge thank you to Ms Marion Larner and the **Rotary Club of Tasman** for sponsoring the day so our students could take part in this amazing experience.



TASMAN HAMPSHIRE DOWN STUD

This week the sheep team have been deciding which 5 sheep to take to Agfest to compete with in the Schools Junior Livestock Competition. Tasman has 4 cattle teams and 1 sheep team to defend their Championship at last years inaugural competition. You can find our students at Agfest in and behind the central arena.



Our older ram, Tasman 'Pillar' met our new younger ram, Evanstoke 'Splinter'. Pillar was shorn and therefore we put his new sheep rug onto him.

Our sheep team is coached by Stuart Cordwell and he works with Drew C, Sam A and Josh S.

Alexi Bancal has returned to make up our team of 4.



Support the Tasman sheep and cattle team at Agfest . Each competition counts towards the Livestock Handlers Cup which we won last year. We are behind the central arena between 4th and 5th street.

You will find us in the Central Arena for the following events: _

Thursday 9.00am School Team of Three Cattle Handlers

10.00am Junior Farmer Challenge Round 1

11.20am Junior Farmer Challenge Round 2

1.30pm Junior Judging (Cattle & Sheep)

Friday 10.30am Beef Cattle Breeds Classes

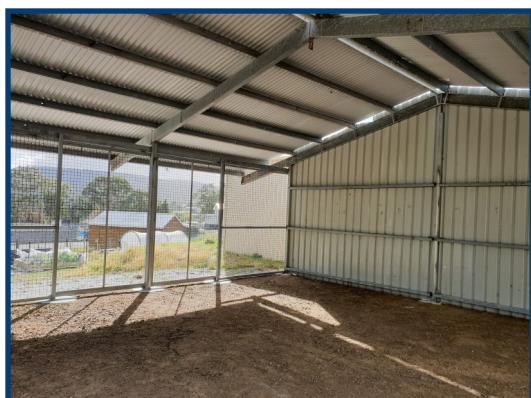
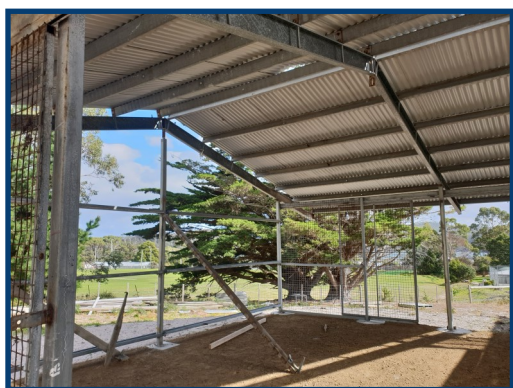
12.30pm Beef Cattle Breeds Classes

3.30pm Sheep Breeds Classes

Saturday 10.00am Junior Beef handlers



Farm News..... We're well on our way to learning about aquaculture at Tasman. With support from the 'Rose' family from Bagdad to erect the shed and Tassal who have sponsored the excavation and footings, our shed is ready for the tanks to go in. The Tassal technical crew are going to help us install tanks and set them up for the fish to grow.



Our Thanks to :-

Tassal

'Rose' Family Wally, Brendan, Matthew, Daniel, Ross, Don.

Stuart Cordwell

Drew Churchill

Scott Linnell Cartage & Contracting

for their support



YOUR INVITATION

Ted Barrance, Principal of
Tasman District School

INVITES

Members of the Community
to attend the

TASMAN DISTRICT SCHOOL OFFICIAL SCHOOL OPENING

VENUE: TASMAN DISTRICT SCHOOL FOYER

DATE: THURSDAY 16 MAY 2019

TIME: ARRIVE AT 10.55 AM FOR AN 11.00 AM START

RSVP

Reply to 03 6250 2126 or email: tasman.district.school@education.tas.gov.au
by Tuesday 14 May, 2019

School Association AGM

School Association AGM will be held **Monday May 20 at 5.05pm**. If you wish to nominate for a position please fill in the below nomination form and return no later than **Friday May 17 at 3.30pm**.

Completed forms can be posted, scanned and emailed to: taman.district.school@education.tas.gov.au or passed in at the School Office. Please check all details carefully as incomplete forms cannot be accepted.

A copy of the School Association Constitution is available from the office or by visiting the Online School Association Constitution Register at <https://documentcentre.education.tas.gov.au/Pages/schoolassociations/a-z.aspx>

Note: two existing members of the School Association must nominate a community member. Positions are for a period of three years.

Membership of the School Association provides an opportunity to be involved in the school in a positive way, participating in discussion and decision making on a wide range of issues (policies, budget approval etc.), and representing the concerns of others. Meetings are held twice a school term in week 3 and 9 and are usually of less than 2 hours duration.

Tasman District School Association Inc.
Nomination Form
For position of Parent Member/Community Member

Candidate's Name _____

Address _____

Phone: _____

Signed _____ Date ____/____/____

Proposer's Name _____

Address _____

Signed _____ Date ____/____/____

Secunder's Name _____

Address _____

Signed _____ Date ____/____/____

Tasman District School Lunch Order Price List

Supplied by Port Arthur General Store & Takeaways.

FRIDAYS ONLY

Lunch orders need to be given to class teacher by 9.20am

| ITEM | \$ |
|--|--------|
| Ham, Chicken or Vegetable Salad Roll (Lettuce, Cheese, Tomato, Beetroot, Carrot, Cucumber & Mayo) | \$5.00 |
| Ham, Chicken or Vegetable Salad Wrap (Lettuce, Cheese, Tomato, Carrot, Cucumber, Red Onion) | \$5.00 |
| Ham & Cheese Sandwich (Toasted or Fresh) | \$3.00 |
| Chicken, Cheese & Mayo Sandwich (Toasted or Fresh) | \$3.50 |
| Toasted Focaccia's (Ham & Cheese or Chicken, Cheese & Mayo) | \$5.00 |
| Party Pie | \$1.50 |
| Sausage Roll | \$2.00 |
| Meat Pie | \$3.50 |
| Cauliflower & Cheese Pie | \$5.00 |
| Mini Quiche | \$1.50 |
| Pasta Bolognese | \$4.00 |
| Lasagne | \$5.00 |
| Vegetarian Burger | \$6.00 |
| Cheese Burger | \$5.00 |
| BLT – Bacon, Lettuce & Tomato Burger | \$5.00 |
| Egg & Bacon Roll with Tomato Sauce | \$5.00 |
| Chicken, Cheese & Mayo Burger (Add Bacon extra \$0.50) | \$5.00 |
| Warm Chicken Wrap (Sweet Chilli, Sour Cream, Lettuce, Tomato, Cheese) | \$6.50 |

| ITEM | \$ |
|--|--------|
| Chicken Nugget | \$0.70 |
| Country Chicken Strips | \$1.20 |
| Sweet Chilli Chicken Strips | \$2.00 |
| Pasta Salad | \$3.50 |
| Chicken or Ham Salad (Lettuce, Cheese, Tomato, Beetroot, Carrot, Red Onion, Cucumber, Mayo or Italian Dressing) | \$5.00 |
| Custard Tart – Small | \$1.50 |
| Fruit Salad Cups | \$3.00 |
| Hartz Water 600ml | \$2.00 |
| Big M (Chocolate or Strawberry) | \$2.00 |
| Juicy Isle Pop Tops (Apple, Orange or Apple Blackcurrant) | \$2.00 |



Tasman Basketball



Aussie Hoops Basketball Program is starting next **Thursday May 9** at the Tasman Civic Centre every Thursday for 6 weeks.

These sessions are offered to boys and girls aged 5 to 10-year-old.

Sessions will be run by qualified coaches from 4pm to 5pm

Cost for new participants is \$50
(Includes a Participant Pack with a singlet, bag and ball)

Returning participant cost is \$15

Aussie Hoops Basketball Program will be run each school term
(provided enough participate)

Register on line here

<https://reg.sportingpulse.com/v6/MapFinder/mapfinder.cgi?r=13&sr=40&type=3&stt=pc&aID=15696>



Tasman Basketball



Reminder that Basketball is up and away for students aged 12 to 18.

We will be finalising teams and rosters this Thursday 9 May so those of you who have already signed up and those who have not yet done so, make sure you get there. You can give your name to Carlin Little, Bec Hull or Richard Idstrom—but the main thing is to **turn up** on **Thursday** if you would like to play.

Games are played alternate Thursdays and Fridays (see the schedule below)

Dates for May

Thursday 9 May 3 - 4pm

Friday 17 May 3-5pm

Thursday 23 May 3- 4pm

Friday 31 May 3-5pm

Dates for June and July will be advertised in future reports.

All students are welcome

Please bring lots of drinking water. We look forward to seeing you there

Gary Chevalier, Dave Judge, Richard Idstrom, Bec Hull, Carlin Little, Tim and Jade Allingham

 **Bendigo Bank**
Bigger than a bank.

Nubeena & Tasman
Community Bank® Branch

Dates to Remember:

| | |
|----------------------------------|--|
| Wednesday 1 May - Saturday 4 May | AGFEST - Selected Cattle Handling Students |
| Thursday May 9 | Parents & Friends Mothers Day Stall - School Hall @ Lunch Time |
| Monday 13 May | Scholastics Book Club Due Back |
| Tuesday 14 May - Friday 24 May | NAPLAN—Year 3, 5, 7 & 9 Students |
| Thursday 16 May | Official School Opening |
| Monday 20 May | School Association AGM - 5.05pm School Meeting Room |
| Wednesday 22 May | National Simultaneous Story time “Alpacas with Macaras” |
| Friday 24 May | School Fun Run |
| Friday 31 May | Selected Students to Campbell Town Wool Handling Comp |
| Saturday 1 June | Selected Students to Campbell Town Sheep Show |
| Wednesday 5 June | Clean Up Our Patch |
| Thursday 6 June | Primary Performance “Scien-tastic” |
| Wednesday 12 June | Selected Students RECLINK Football |
| Wednesday 12 June | Selected Students Fish Care Program |
| Thursday 13 June | Selected Students SPSSA Cross Country Carnival Div C |
| Tuesday 2 July | Parent/Carer Teacher Evening |
| Tuesday 3 July | Parent/Carer Teacher Evening |

