



RA 4 Nubeena Back Road  
Nubeena TAS 7184  
20 May 2019

Email: [tasman.district.school@education.tas.gov.au](mailto:tasman.district.school@education.tas.gov.au)

Phone: 03 6250 2126

<http://www.tasman.education.tas.edu.au>

## Principal News

Last Thursday was the Official Opening of our new school buildings and the revitalised spaces around the school. The new infrastructure was officially opened by Education Minister, Mr Jeremy Rockliff and members of the SRC. There were a number of officials from political parties, DoE personnel, HBV Architects, Bennetts Construction, members of the school community and past staff from the school who were there to witness this auspicious occasion. Minister Rockliff praised the school community and the all involved in the process for the significant contribution to the community that the new facilities have made. The students spoke about how the improved spaces have assisted them in their learning and that it has become a welcoming and respectful place to learn each and every day. I spoke to the guests about the challenges of the building process and the amazing resilience of the school community to share in the vision for what has now become an incredible asset to the Tasman community. This is phase one of our redevelopment and we have more plans in place to improve other infrastructure around the school and also the grounds as well.

### NAPLAN 2019

Well done to all students in Year 3, 5, 7 & 9 in their NAPLAN testing so far. While there are stories around the country about how students have missed large chunks of time in their test sessions as there have been technical issues, we have experienced very little in the way of glitches or lost time. There have even been calls to resit NAPLAN tests, but as we have learnt today the Minister for Education has said that Tasmanian Government Schools will not have to resit the tests later in the term. The focus

for us will be to get on with our teaching and learning and use the data from these tests over a number of years to determine the areas of strength in our school and areas for improvement. Thank you to everyone involved for your understanding and commitment to this process, a special thanks to Ben Vaughan-Williams, Nathan Mol and Nathan Stewart for ensuring our school computers and network connections are able to support the NAPLAN testing.

Our wishes and condolences to the family of Barbara Clifford who passed away on Friday. Barbara had a long association with Tasman District School students and has taught music to countless students over the years. She will be sorely missed by staff, students and the wider community.

Kind Regards, Ted Barrance  
Principal

## Star of the Week Awards

**09/05/2019**

Prep - I

**Lily M**

Year 1 - 2

**Braxton W**

Year 3 - 4

**Aiden S**

Year 4 - 5

**Gemma S**

Year - 6

**Harry S**

**16/05/2019**

Prep - I

**Riley R**

Year 1 - 2

**Bilee-Rose M**

Year 3 - 4

**Mia B**

Year 4 - 5

**Rachael L**

Year - 6

**Brayden A**



## Launching into Learning - LIL

Launching into Learning, **Term 2** held every Friday during school term, program and dates to follow.

### Moving On

School Hall 9.00am - 10.00am

### LiL Learn & Play

Kindergarten 10.15am - 11.30am

For further information and a term program, please contact Elizabeth Legge (Launching into Learning Coordinator) on 6250 2126.



## WWVP Session

Would you like to obtain a Working with Vulnerable Peoples Card so you can volunteer at school or with P&F etc, but find it difficult to complete online. Michelle Cornish will be holding a session to help you complete the online component. **Thursday 30 May 1.30pm** meet in the school Foyer.



### Online Working with Vulnerable People Session

Together we'll complete the online component to obtain your WWVP clearance

Approximate duration - 1 hour

Flexible & Minimal hours to volunteer in class

Wide variety of opportunities - reading, sports, art, farm and more.....

We can engage with our kids in their world

## Levies

Thank you to all families that have paid their levies or made arrangements to pay by instalment. Levies are now **overdue**. If you are experiencing difficulties in payment please contact our school business manager Jacqui Hunter 6250 2126 to make alternative arrangements.



## Woolworths - Earn & Learn

Woolworths Earn & Learn is back, between 1 May and 25 June 2019 and Tasman are excited to be taking part. You can collect stickers at Woolworths that go towards Earn & Learn points. For every \$10 you spend at Woolworths (excluding the purchase of tobacco, liquor and gift cards), you will receive a sticker. The more points the school earn, the more we can redeem from a choice of over **10,000 educational resources** including mathematics and English resources, art and crafts materials and much, much more!

**The School will be running a competition offering prizes for the top 3 students that collect the most stickers.**

**First prize is a \$20 lunch order voucher kindly donated by the Port Arthur Store & Takeaway.**

**Just bring your completed sticker sheet (available from woolworths and the school office) into the school office to be counted, winner announced soon after close of competition.**

We are grateful for your support and look forward to a successful program.



## Breakfast Club

TDS Breakfast Club will be held on a Tuesday and Wednesday morning from 8.30am in the Trade Training Centre. All students are welcome to come along and have a healthy breakfast to kick start their learning day.



## Bus Changes

Parents and Carers are reminded to notify the school office of any **bus changes before 2.00pm**. This is essential for the school to fulfil our duty of care at the end of each school day.



## Parents & Friends Update

Well it has been a busy few weeks for our small group of volunteers who have been busily organising past and future fundraising events. We would like to thank all parents and community members for their amazing support, without you we couldn't raise the much-needed funds for our students and their activities.

Thank you to everyone who kindly donated jars, and succulents for our Mother's Day stall. Your kind generosity assisted P & F in raising over \$300.

Thanks to the kind donations by Osborne Heli Tours, Port Arthur Historic Site & Sabine Kingston, the Mother's Day raffle raised over \$800, an amazing effort. Thank you to everyone who purchased a ticket and congratulations to our winners.

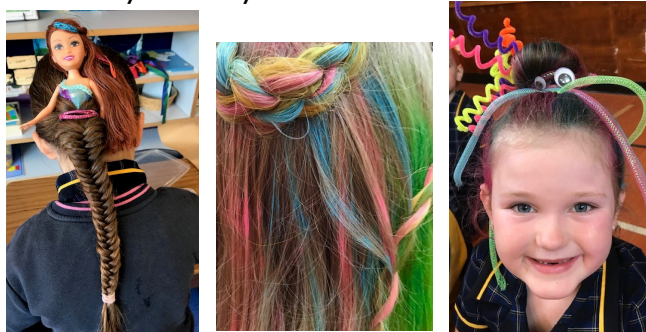
1<sup>st</sup> Prize: Michelle Cornish

2<sup>nd</sup> Prize: Talika Berry

3<sup>rd</sup> Prize: Stuart Nattey

We hope everyone had a lovely Mother's Day.

Thanks to all students that took part on Thursday 2 May in the Crazy Hair Day.



### Up Coming Events:

**Thursday 30 May** – Sausage Sizzle - \$2 each during lunch under the shade sails (weather permitting).

**Thursday 25 July** – Krispy Kreme Fundraiser  
Pre-orders only, glazed \$23 per dozen or assorted \$27 per dozen, collect from school hall 3-4pm (unless organised prior). Order forms will be placed around the community at shops and the school or contact P & F members directly.

### Entertainment Books:

[www.entertainmentbook.com.au/orderbooks/91z9286](http://www.entertainmentbook.com.au/orderbooks/91z9286)

or phone Amanda on 0478 607 168 If you have any questions. Book's received by students to either be purchased online or complete the order form enclosed in the envelope and return to school. If not purchasing please returned the book by 23/5/19.

Madeline Wade, Sonia Wade & Amanda McCulloch

## Official School Opening

A few photos from Thursday's Official School Opening.



## Cross Country Fun Run

TDS School Cross Country Fun Run will be held on **Friday, 24 May** starting at **11.00am**. The students have been practicing their running course in their Physical Education lessons and are well prepared for the event. We hope to create a day of fun for the students in an environment that encourages participation. We welcome parents, carer and family members to attend to support and cheer the students as this has a positive impact on the participants, there is a lot of areas for spectators to stand. In the event of wet and muddy conditions, please ensure that students bring spare shoes, socks and clothes to school.

A map of the approximate courses is below

Prep to Year 2 - **Light Green**

Year 3 - **Pink**

Year 4 to 6 - **Blue**

Secondary - **Pink plus part of Cooks Road**

The students have been encouraged to set their own individual goals and be their best.

Students in Years 3 to 6 and secondary will be selected from this event to form the Tasman District Cross Country Team. They will participate on Thursday June 13 in Division C. Year 3 to 6 at Lindisfarne North Primary School and secondaries at Bayview Secondary College. The Selected students will receive a letter with more information about the Interschool Event.

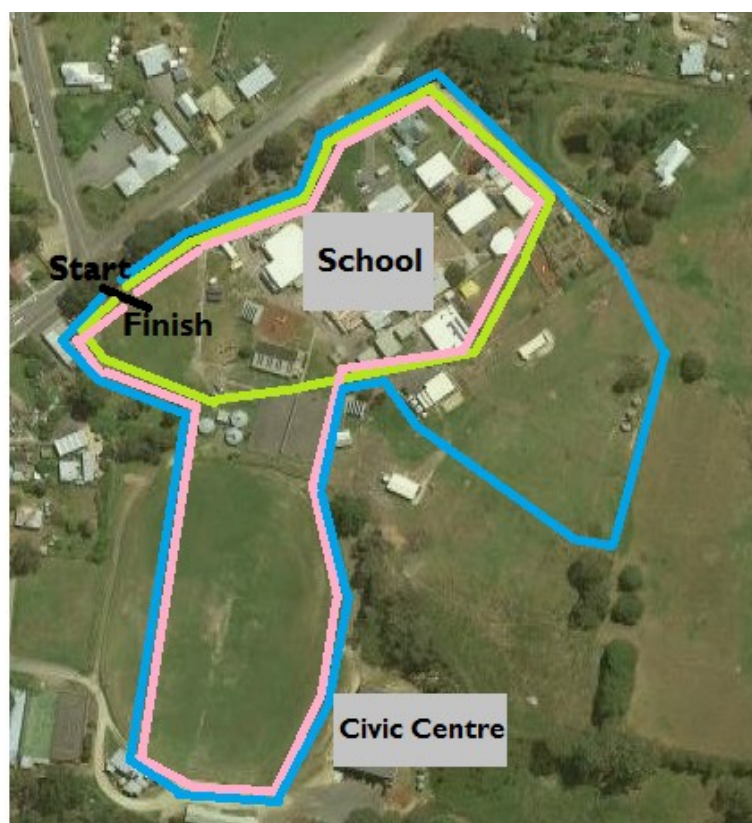
The money raised by students in the CUA School Fun Run goes towards **School Camp Programs**.

### Approximate times of events:

11:05 Year 2 Boys	12:10 Year 1
11:10 Year 2 Girls	12:15 Prep
11:15 Year 3 Boys	1:25 Year 10 Boys
11:20 Year 3 Girls	1:30 Year 9 Boys
11:30 Year 4 Boys	1:40 Year 10 Girls
11:35 Year 4 Girls	1:45 Year 9 Girls
11:45 Year 5 Boys	1:55 Year 8 Boys
11:50 Year 5 Girls	2:00 Year 7 Boys
11:55 Year 6 Boys	2:10 Year 8 Girls
12:00 Year 6 Girls	2:15 Year 7 Girls



*just  
do  
your  
BEST.*





# AGFEST



## Junior Livestock Handlers Competition

### 2019 Winners

### Tasman District School



**Champions for the second year in a row the Tasman team beat 5 other school in the Livestock Handling Challenge.**

#### **Our thanks to**

Our sponsors Wayne and Helen of Cherry Tree Shorthorns for lending and transporting our livestock, and to Stuart Cordwell for driving the bus and coaching the sheep team.

Rural Youth , particularly Caine and Ashley Evans for organising such an amazing event.

To the TDS Parents & Friends and Bendigo Bank Nubeena for supplying our shirts and the Revitalising School Farms Program for organising our accommodation.



# School Team of Three Cattle Handlers



**1st**

Lizzie  
Ashtyn  
Ruby



**2nd**

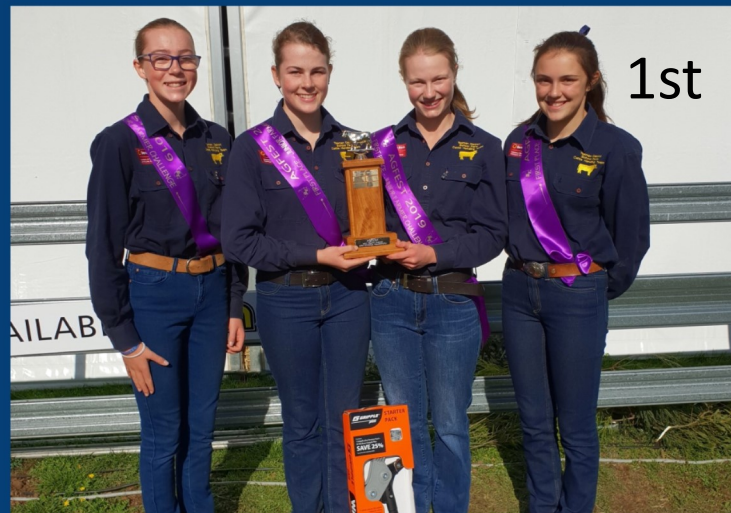
Jayme  
Candina  
Abigail



# Junior Farmer Challenge



**AG-FEST**





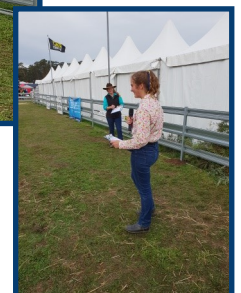
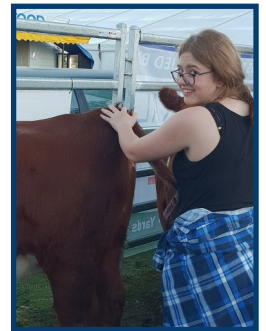
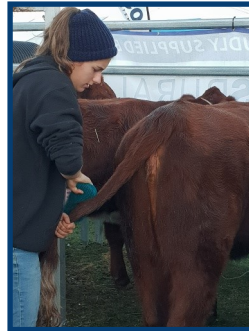
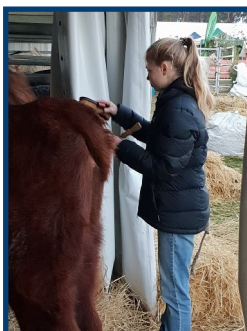
# Junior Sheep Judging — Sheep Breed Classes







# Beef Breeds Classes & Beef Judging





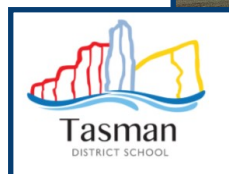


# Junior Cattle Handlers

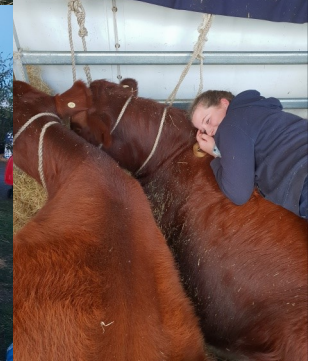
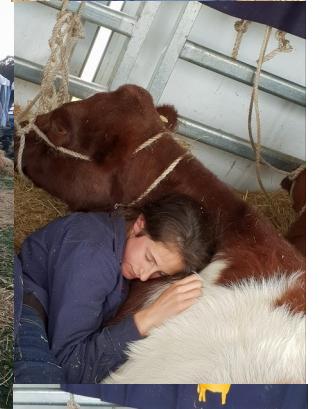


**AGFEST**

Candina  
Agfest  
2019  
Champion  
Junior Cattle Handler  
Reserve Champion  
Jocelyn  
Candina will represent  
Agfest at the State Finals









## Community News



### FREE home cooked healthy frozen meals

DTNH are offering **FREE home cooked healthy frozen meals** available from the Tasman Neighbourhood House. Members of the community are welcome to come and help themselves from the kitchen freezer when the house is open. We know some community members may struggle to make ends meet, especially in winter. We'd appreciate your help with spreading the word about these **FREE meals**.



SOUTH EAST CHEER AND DANCE  
PROUDLY PRESENTS

## Progressive Dinner FUNDRAISING

MAY 31 • 5:30 PM  
OVER 18 EVENT

PLEASE JOIN US FOR A NIGHT OF GOOD FOOD AND FUN!  
WE WILL KICK OFF AT OUR DANCE STUDIO  
WITH APPETIZERS AT 5.30PM.

FOLLOWED BY 3 COURSE MEAL AT VARIOUS LOCAL LOCATION  
AND FINISHING THE NIGHT AT THE PEMBROKE FOOTBALL  
CLUB WITH ENTERTAINMENT.

DRINKS AVAILABLE FOR PURCHASE ON THE NIGHT, ALONG WITH  
FUNDRAISING FUN GAMES, RAFFLE AND GIVE AWAY PRIZES.

### BOOKING:

PLEASE CALL OR TEXT

**BOOK NOW**  
LIMITED TICKETS

### PRE SALE TICKETS

TICKETS INCLUDE FOUR COURSE DINNER + THREE SIGNATURE DRINKS

SELF DRIVE + DINNER + DRINKS	\$70.00
PEMBROKE PICK UP + DINNER + DRINKS	\$75.00
HOME PICK UP + DINNER + DRINKS + HOME DROP OFF (MIDWAY TO CARLTON AREA ONLY)	\$85.00

CALL/TEXT TO BOOK NOW:

0439502553

## Free After School Program



### Circus Workshop

Run by Mark Sands

Every Friday afternoon

Friday 24th May - Friday 28th June

3.00 - 4.30 pm

In the School Hall

Bookings Essential

Call the Dunalley Tasman Neighbourhood  
House to book your spot 62535579



### Are You A Parent of a Child Aged 2 to 12?

The Parenting and Family Support Centre at the University of Queensland is conducting research into parents' opinions about parenting and parenting programs. If you have a child between 2 and 12 years, we would love to hear your views on parenting and the services that are available to you as a parent. You will need to complete a short survey. To find out more or to participate please visit <https://exp.psychuq.edu.au/parenting>



## Dates to Remember:

Monday 20 May	School Association AGM - 5.05pm School Meeting Room
Wednesday 22 May	Selected Yr 10 Students to ICT Careers Conference
Wednesday 22 May	National Simultaneous Story time "Alpacas with Macaras"
Thursday 23 May	Kinder to Port Arthur Historic Site
Friday 24 May	School Cross Country Fun Run
Monday 27 May	Selected students to TASSAL Excursion
Thursday 30 May	WWVP Session 1.30pm - All Welcome
Friday 31 May	Selected Students to Campbell Town Wool Handling Comp
Saturday 1 June	Selected Students to Campbell Town Sheep Show
Wednesday 5 June	Clean Up Our Patch
Thursday 6 June	Primary Performance "Scien-tastic"
Wednesday 12 June	Selected Students RECLINK Football
Wednesday 12 June	Selected Students Fish Care Program
Thursday 13 June	Selected Students SPSSA Cross Country Carnival Div C
Tuesday 2 July	Parent/Carer Teacher Evening
Tuesday 3 July	Parent/Carer Teacher Evening

