



RA 4 Nubeena Back Road
Nubeena TAS 7184

Email: tasman.district.school@education.tas.gov.au

Phone: 03 6250 2126

<http://www.tasman.education.tas.edu.au>

15 November 2019

Principal News

I have had a couple of enquiries over the past few months in relation to the partnership between Tasman District School and Tassal. Rather than repeating the same message, it seems appropriate to inform our school community about the nature and reasons for the partnership through our newsletter. Previously, Tasman District School was engaged in a partnership with LendLease for a number of years. This was facilitated by the Australian Business and Community Network (ABCN), and involved LendLease's Springboard program, which fostered community connections and staff professional development.

At the conclusion of the Lendlease partnership we looked to the local business community to establish a new partnership. We already have an ongoing relationship with Port Arthur Historic Site, which is very positive and provides some wonderful opportunities for our students to learn about both the nature of employment, and the history of our region. Since Tassal is also a major employer on the Peninsula, and has the resources and capability to engage with our school of 200+ students on the scale necessary, they seem to be the obvious choice as a new partner.

ABCN is also facilitating this new partnership, and we are engaging in a number of projects, including:

- The development of an Aquaculture Training Facility on the School farm
- Breakfast club run by Tassal each month
- Work readiness programs in the High School, including *Interview to Success*

- Sponsorship of our Café class, which raises money for School Camps

I meet every four months with the Tassal Community Advisory Group (CAG) to discuss developments in Tassal operations and the efforts to create shared values between the community and industry. We have been very proactive in making improvements to practices and even helping to reduce waste and pollution on the Peninsula through recycling initiatives, litter reduction programs and shoreline clean-ups. We will continue to work with Tassal to maintain and protect the amazing natural environment of the Tasman and Forestier Peninsulas.

Kind Regards, Ben Vaughan-Williams

Principal

Star of the Week

07/11/2019

Prep - I

Lily M

Year I - 2

Angus H

Year 3 - 4

-

Year 4 - 5

Jack P

Year - 6

Blake R

14/11/19

Prep - I

Axel P

Year I - 2

Bonny B

Year 3 - 4

Chloe C

Year 4 - 5

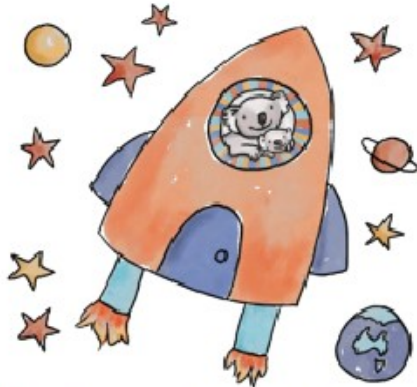
Gemma S

Year - 6

Neave B

Launching Into Learning

Launching into Learning, Term 4 held every Friday during school term.



Launching into Learning
Moving On
School Hall 9.00am - 10.00am

LiL Learn & Play

Kindergarten 10.15am - 11.30am

For further information and a term program, please contact the school office on 6250 2126.

2020 Kinder Enrolment

In order to be well planned for 2020 it is vital that we have a good understanding of how many Kindergarten students we are expecting for 2020. If your child was born in 2015 please contact the school office for an enrolment form. This applies to families within our school zone who have students of Kindergarten age for 2020. When enrolling in a Tasmanian Government school for the first time, the following evidence must be provided:

- Student Identity
- Parent/Guardian Identity
- Students Residential Address
- Immunisation History

If you have any difficulty providing evidence, please contact the office to discuss options. Our staff are happy to photocopy any of the required documents to assist the enrolment process.



School Health Nurse



Tasman District School is a part of the School Health Nurse Program.

Nurse Becca will be visiting Tasman every Wednesday and Thursday for the full school day. Becca works on issues that impact on general health and wellbeing of students. She may also visit classes to deliver health

related programs such as dental health, resilience building, hygiene and hand hygiene, relaxation, just to name a few!

Amongst other things, Nurse Becca is available to check the hearing and vision of any student who attends Tasman District School.

Becca is also available to chat with students or parents/carers about any health issues that they may have – from concerns about weight and healthy eating, dental health, continence, sleep issues or help with any other health concerns or managing complex health needs.

Primary aged students **must** have a signed consent form from their parents/guardian for Becca to be able to work with their child. Consent forms are available at the office.



TASSO Survey

The Tasmanian Association of State School Organisations (TASSO) regularly provide feedback to the Minister for Education and the Department of Education.

A current topic generating a lot of interest is the use of mobile phones and other student owned devices in school. We are asking all parents, students, other family members, school staff, and interested members of the public to complete our survey which can be found on the following link :

https://www.surveymonkey.com/r/mobile_devices_in_schools



We want your opinion about MOBILE DEVICES in Tasmanian schools. Please complete our survey. Parents, school staff & students have your say.

Toy Drive - City Mission

Can you spare a small toy to brighten Christmas for a child?

Tasman District School are collecting presents for Hobart City Mission's (HCM) Christmas Assistance Program.

We have been assigned the age category 0 - 2 to purchase gifts for. This helps Hobart City Mission to ensure there is an adequate amount of toys in particular age categories.

As a guide, preferred gifts are: for the ages listed above, valued below \$50, with broad appeal, please remember to leave gifts unwrapped

Please drop off your donation to Tasman District School foyer before Monday 2 December.

For more information on HCM visit www.hobartcitymission.org.au or follow @hobartcitymission on social media

Thank you in advance for supporting our local community!



Primary Art Fundraiser

Primary Art are fundraising to purchase additional art supplies. Brooches are made and donated by our very own primary art teacher Suze Van Der Beek. Brooches are available for purchase at the school office.


Photo Brooch \$20.00, Porcelain Brooch \$10.00, Ceramics Small \$5.00 Large \$10.00, Earrings \$10.00



TDS Farm Raffle

Tasman District School Farm is holding their Annual Fundraiser Raffle to be drawn at the ARA Assembly on Wednesday 18 December. If you have a raffle book it would be appreciated if any outstanding books (sold or unsold) with any money raised be returned to school by November 30. If you would like to purchase tickets they are available at the school office \$2.00 a ticket.

TASMAN DISTRICT SCHOOL FARM

 Tasman School Farm Annual Raffle 2019 Drawn at the ARA Assembly Wednesday December 18th 2019	
Name Address Phone	No. 1000 Prizes: 1st 1 Night accommodation for 4 in a log cabin. 'On the Bay' donated by Stewarts Bay Lodge 2nd Sea Cliffs & Convicts Helltour (15 mins) Gift card donated by Osbourne Helitours 3rd \$100 Voucher Lavender Farm donated by Rebecca White MP 4th Cummins Grey Puffa vest donated by Denny Mechanical 5th \$100 Voucher Roberts Ltd. donated by Tas Alkaloids 6th \$100 Voucher Roberts Ltd. donated by Tas Alkaloids 7th Family Voucher to Port Arthur Entry and Tour (2 adults, 6 children) donated by Port Arthur Historic Site 8th Camping Gas BBQ and Gas Bottles donated by Repco 9th \$50 Voucher Puddleduck Vineyard donated by Puddleduck Vineyard 10th Bottle Devils Corner Pinot Noir Tickets \$2 each
	No. 1000

Primary Botanical Garden Excursion

As a celebration of hard work for the 2019 school year, primary students from Prep to year 5 have the opportunity to attend the performance of *Waltzing Matilda, The Tale of a Dancing Sheep*, at the Royal Tasmanian Botanical Gardens in Hobart on **Monday the 16 December**.

As this is not part of the DoE core curriculum there is a **cost per student of \$13.00** to cover the bus hire to and from the performance, and entry.

Primary students will need to return the completed permission form and make payment to school before **Friday 29 November**. If payment and permission slip isn't returned before this date, your child will not be able to attend the performance.



Playground Equipment

The playground equipment located in the Kinder area has been deemed unsafe and is now a "NO GO ZONE". The school is in the process of having the equipment removed.



Frank MacDonald Prize



Congratulations to Melanie Shoobridge in Year 9 who was one of 6 state-wide students recently announced as a recipient of the 2019-20 Frank MacDonald Memorial Prize a 10-day study tour of the Western Front in France and Belgium.

The 2019-20 Frank MacDonald Memorial Prize group were officially announced on

November 1 at a moving presentation ceremony in Ulverstone, the birthplace of Frank MacDonald MM.

Minister for Veterans' Affairs Guy Barnett said the recipients of the Frank MacDonald Prize have the opportunity to link with veterans and gain a greater understanding of Tasmanian and Australian war history.

Well done Melanie this prize will be a life-changing experience.

Melanie acknowledged that this prize would not have been possible without the ongoing inspiration and support of Ms Haight during the research and writing process in HASS class. What an Achievement.





Scholastic Book Club

Sales from the Scholastic Book Fair and Book Club have added **\$1100** worth of **new books** to our school library this year. Don't miss out on ordering in the latest Book Club catalogue for Christmas, orders due back by Monday 25 November.

SCHOLASTIC Book Club

Three **Easy** Ways To Pay

- 1 CREDIT CARD** Your School is in the LOOP! When you order and pay by LOOP, do not fill in the order form or return anything to school. Your order will be electronically linked to the rest of your school's order. Visit scholastic.com.au/LOOP OR download the app:  
- 2 CASH** If your school accepts cash payments, please enclose cash with completed order form and return to school.
- 3 CHEQUE OR CREDIT VOUCHER** If paying by cheque, please make cheques payable to Scholastic Australia. Attach cheque or voucher to completed order form and return to school.

Secondary Arts Evening

Tasman District School

Secondary Arts Evening

Tasman Civic Centre

Thursday 12 December 2019

6.30pm-9pm

Orchestra

Small Ensembles

Soloists

Gr 7/8 Band

Gr 9/10 Bands

Drama

Dance

Year 11/12 Photography Exhibition

*Supper available to purchase at Interval
catered by*

Tasman District School Parents & Friends

Gold Coin Donation Entry

Donations will contribute to production costs

Primary Art/Music Morning

Tasman District School

Primary Art & Music Morning

Tasman Civic Centre

Thursday 5 December 2019

9.00am - 10.15am

**Please bring a plate of
Morning Tea to Share!**



From the School Nurse

EVERYDAY LUNCHBOXES



GRAINS



FRUIT



VEGIES



DAIRY



MEATS/FISH

Top Tips for Lunchboxes

- Keep it simple - this is a good time saver
- Aim for small serves and make sure food containers can be opened easily
- Have a selection of food from each of the Five Food Groups
- Keep 'Sometimes Foods' for special occasions
- The cheapest and best drink for kids is plain water. You can add berries, lemon or cucumber slices to water to add some fun.



Whilst Kinder to Grade Two are participating in Water Orientation it's a good idea to put some extra food in those students' lunchboxes to replace the extra energy they are using in the pool.

Recess/Snack ideas:

- Wholegrain crackers or rice cakes with cheese or vegemite spread
- Fruit or plain scones
- Pikelets
- Fresh fruit—whole or cut up in a container
- Dried fruit—sultanas, apricots
- Crunchy vegetables—capsicum, carrot sticks, cherry tomatoes
- Yoghurt
- Cubes or slices of cheese

With any packaged food,
look for the Health Star Rating



The more stars,
the healthier.

School Health Nurse 'Becca' is at school on Wednesdays and Thursdays if you have any questions about lunchboxes or after more ideas..



Sickness Guide

I NEED TO STAY HOME IF...						
I HAVE A FEVER	I AM VOMITING	I HAVE DIARRHEA	I HAVE A RASH	I HAVE HEAD LICE	I HAVE AN EYE INFECTION	I HAVE BEEN IN THE HOSPITAL
Temperature of 38.1 or higher	Within the past 24 hours	Within the past 24 hours	Body rash with itching or fever	Itchy head, active head lice	Redness, itching and/or "crusty" drainage from eye	Hospital stay and/or ER visit
I AM READY TO GO BACK TO SCHOOL WHEN I AM...						
Fever free for 24 hours without the use of fever reducing medication	Free from vomiting for at least 24 hours	Free from diarrhea for at least 24 to 48 hours	Free from rash, itching, or fever. I have been evaluated by my doctor	Treated with appropriate lice treatment at home	Evaluated by my doctor and have a note to return to school	Released by my medical provider to return to school

From the Sports Desk

On Wednesday 6 November, our High School Athletics Team attended the annual District High School Athletics Carnival at Pembroke Park in Sorell.

The day turned out to be a beauty, with ideal conditions, with help from the South East District Little Athletics Club made the day run smoothly.

Whilst sickness and nervousness got the better of some of our athletes, the ones that made the choice to test themselves all enjoyed a positive experience.

Triabunna won the day followed by Woodbridge, then Oatlands pipped us by a couple of first placings which left us in fourth position.

Congratulations to the team that represented the school so well. They included:

Lanie P, Olivia P, Lachlan B, Sam B, Dieter W, Bede A, Edie L, Rianna S, Kobe P, Jayme N, Jade K, Melanie S, Jocelyn M, Logan F, Declan E, Lee V, Ashtyn W, Lizzie S, Ruby H, Maggie E, Luka S, Hasan C, William E and Drew M.


11 of our students performed particularly well and will represent the Districts Team against the big town schools next week. Congratulations to Sam B, Declan E, Lee V, William E, Rhianna S, Melanie S, Jocelyn M, Jayme N, Lizzie S, Maggie E & Ashtyn W.



Brighton Show 2019



Congratulations to all the students who competed at the Brighton Show.

A full list of results can be found on our  Facebook Page Food and Fibre Production at Tasman District School

Our Thanks to *Cherry Tree Shorthorns* and Mr. Stuart Cordwell for driving the bus and Maureen Reece for providing us with accommodation.



Community News

Dunalley Tasman School Holiday Program

January 2020

The Dunalley Tasman School Holiday Program is for children aged 5-12 years living between Copping and the Tasman Peninsula or attending either the Dunalley Primary School or Tasman District School.

The program is jointly funded by the Education Department.

BOOKINGS & PAYMENTS MUST BE MADE AND CONSENT FORMS MUST BE RETURNED NO LATER THAN 12 NOON Wednesday 11th December

Wednesday 15th January

\$25 per child

Movie

(includes popcorn, drink & ice cream)

& Botanical Gardens



Wednesday 22nd January

\$15 per child

ZooDoo



Departs Nubeena at 8.15am & Dunalley at 9am.

Returning to Dunalley at 3pm & Nubeena at 3.45pm

Important

'Remember a packed lunch and appropriate clothing'

Payments can be made by EFTPOS, cash or direct deposit to:

Dunalley Tasman Neighbourhood House Inc, BSB: 067 007, Acc NO: 2800 8432

Dunalley Tasman Neighbourhood House

172 Arthur Highway, Dunalley 7177

Email: admin@Dunalleytasman.org



Tasman



Community Expo

Tasman Civic Centre, Nubeena

Saturday, 23rd November

11.00 am—3.00 pm

Free Entry

- ◆ More than 20 Peninsula Voluntary Organisations on display
- ◆ Musical Entertainment by the Peninsula Singers including Tasman District School students
- ◆ Free Face Painting
- ◆ Light lunch available from Lions Club of Tasman
- ◆ The Tasman Community Calendar will be launched and available

Support the Community that supports you



HOBART

HOBART REGATTA GROUNDS

9 January - 2 February

LAUNCESTON

ROYAL PARK

6 February - 23 February

SOMERSET

ANZAC MEMORIAL PARK

27 February - 8 March

Book now at **ticketmaster®**

BOX-OFFICE
0413 880 044

sesamestreetcircus.com.au



MAJOR PARTNER SHOWTIME ATTRACTIONS 2 chilli TOLL Tel and © 2020 Sesame Workshop

TASMAN COUNCIL

Community Grants Program 2019-2020

NOW OPEN

Applications are now open for the Tasman Council Community Grants Program.

Tasman Council's Community Grants Program provides financial and in-kind assistance to support community groups and individuals to develop projects, facilities and activities that contribute to the development and promotion of the community.

Assistance will be provided in the form of cash grants or in-kind assistance. Grants of up to \$2,000 may be approved under the Program.

In-kind assistance relates to support through provision of Council services at reduced or no cost. The provision of these services will be considered as a component of the assistance to be provided by Council.

Funds for community groups, individuals, annual events and sporting groups will be considered annually for this program.

Closing date for all applications is 29 November 2019 at 4:30pm. For more information, contact Valena Burns on 6250-9200. Application forms are available online www.tasman.tas.gov.au or at the Tasman Council Office.



Dates to Remember:

Monday 11 Nov - Friday 22 Nov	Kinder to Year 2 Water Orientation
Friday 15 Nov - Saturday 16 Nov	Selected Cattle Handling Students to Huonville Show
Monday 18 November	Free Dress Day - Gold Coin Donation to Camp Quality
Monday 18 November	Cancer Council Camp Quality Show - Prep to Year 6 - All Welcome
Tuesday 19 November	SHSSA Inter-High Carnival (Selected Students)
Wednesday 20 November	Year 4/5 to DTNH
Thursday 21 November	Year 10 to Rosny College
Friday 22 Nov - Sunday 24 Nov	Selected Cattle Handling Students to Deloraine Show
Tuesday 26 November	Primary Students - Ditto Keep Safe Brave Heart Show
Thursday 28 November	P & F Fundraiser Pizza & Milkshakes - Lunch Time
Thursday 28 November	Year 6 to DTNH
Monday 2 Dec - Friday 6 Dec	Year 8 & 9 Canberra Trip
Monday 2 Dec - Wed 4 December	Year 7 Camp
Tuesday 3 December	Year 6 into Year 7 Transition Day
Wednesday 4 December	Kinder Orientation
Wednesday 4 December	Tasman Café - CLOSED
Thursday 5 Dec - Friday 6 Dec	Year 10 Exams
Thursday 5 December	Primary Music and Art Celebration - 9am Tasman Civic Centre
Monday 9 - Tuesday 10 December	Year 10 First Aid Course
Wednesday 11 December	Year 6 Big Day Out
Thursday 12 December	Year 4/5 to DTNH
Thursday 12 December	Secondary Arts Evening 6.30pm to 9.30pm Tasman Civic Centre
Friday 13 December	Year 10 Leavers Assembly
Monday 16 December	Botanical Garden Performance - Prep to Year 5 (Students who Pay)
Tuesday 17 December	Kinder Gathering 1.30pm - 3.00pm
Wednesday 18 December	Tasman Café - CLOSED
Wednesday 18 December	Achievement Recognition Assembly - Civic Centre 1.30pm
Thursday 19 December	FINAL DAY TERM 4